

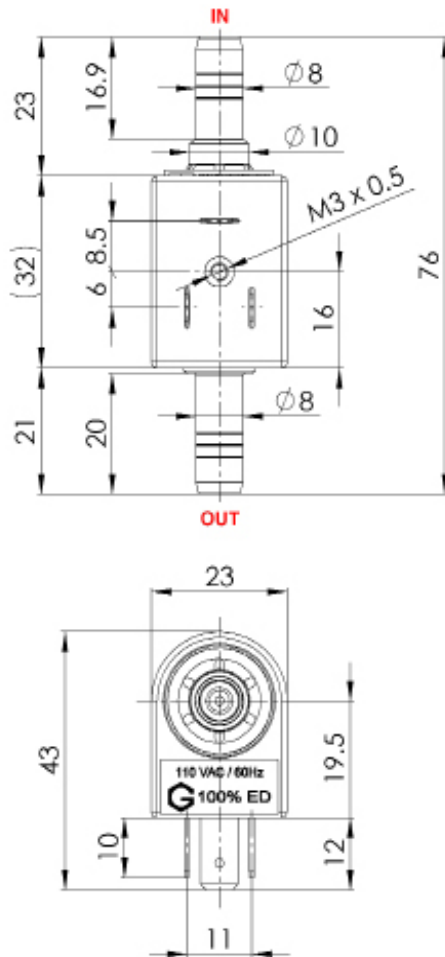
SOLENOID PUMPS

# EMX08

TECHNICAL DATA



## DIMENSIONS



## NOMINAL RATED DATA

Max. pressure	0.8[bar]	
Max. flow rate	10[l/h]	
Max. suction height	3[m]	
Viscosity range	1...600[mm <sup>2</sup> /s]	
Filter	Mesh 100	
Tension	230[V] (12, 24, 110V)	
Frequency	50, 60[Hz]	
Electrical connection	3 x 2.8 x 0.5 [mm] DIN43650	
Power	18[W]	
Weight	~95[g]	
Temperature	1...50[°C]	
Insulation	Class F Class 1	100% ED / 20 [°C]
Noise level	Open flow Maximum pressure	35[dB(A)] 29[dB(A)]

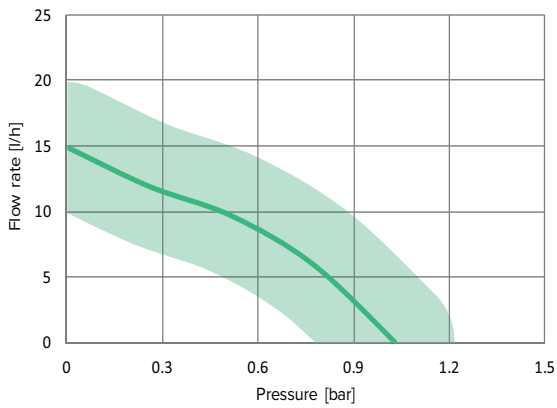
SOLENOID PUMPS

**EMX08 230V**

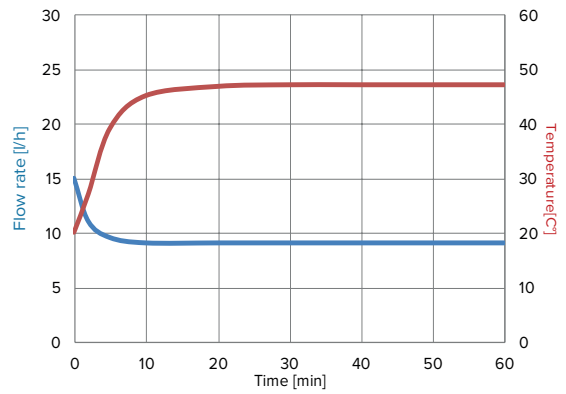
TECHNICAL DATA



**PERFORMANCES**



**OPEN FLOW & TEMPERATURE**



Tested with 20°C of water at ambient temperature

**ACCESSORIES**



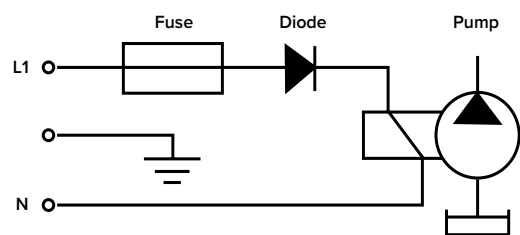
Heating sink



Mounting rubber

Large choice of materials & options

**ELECTRIC WIRING DIAGRAM**



Please refer to instruction manual for more installation details. For more information, visit our website : [www.gotec.ch](http://www.gotec.ch)

Certifications



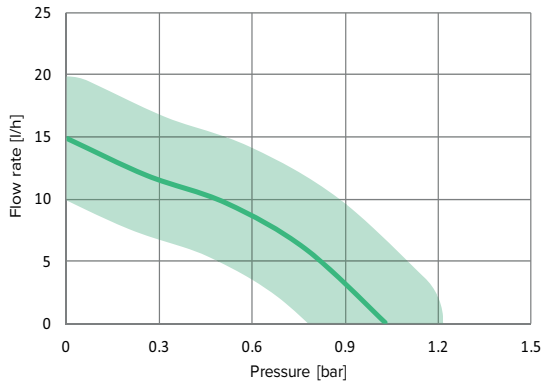
**SOLENOID PUMPS**

**EMX08 24VAC**

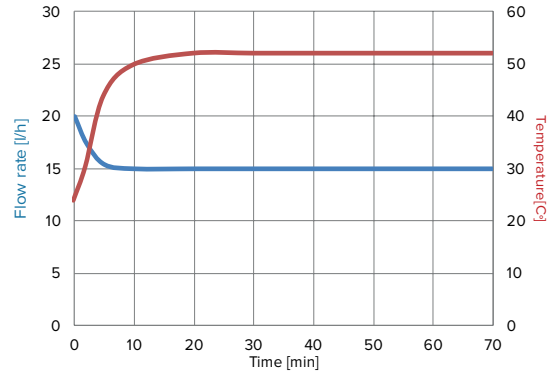
**TECHNICAL DATA**



**PERFORMANCES**



**OPEN FLOW & TEMPERATURE**



Tested with 20°C of water at ambient temperature

**ACCESSORIES**



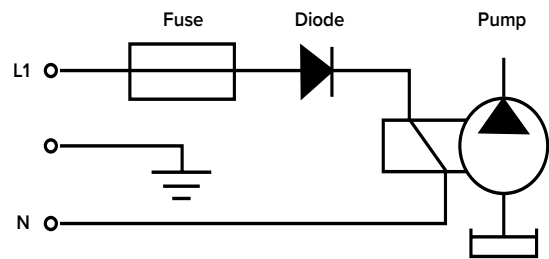
Heating sink



Mounting rubber

Large choice of materials & options

**ELECTRIC WIRING DIAGRAM**



Please refer to instruction manual for more installation details. For more information, visit our website : [www.gotec.ch](http://www.gotec.ch)

**Certifications**

